

# The CLS CCC



## Color Changer Controller

The CLS CCC is a color changer controller for colorscrollers to followspots. It has an easy programmable cue and setup from a PC with USB, and it fits all followspots using velcroue. The CCC has built in 24V 1,6A powersupply for the scroller, 7 DMX channels and one button operation. DMX and 24V out by 4 pin Neutriks XLR. 100-240V 50-60Hz mains power.

### User instructions:

Connect the CCC to the mains power and the USB of a PC.

You will see the message “new device is found” and the Windows will automatic install the driver.

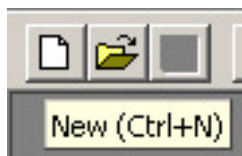
(Require Win98, 2000, XP)

Copy the CCC.exe to your PC.

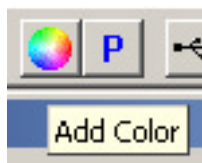


Start the program by dbl. click at the CCC.exe

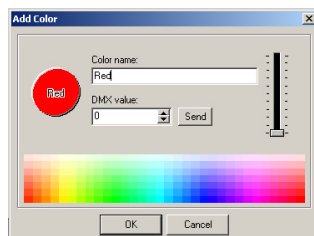
The first time you use the program or buy a new Color Scroller device, you have to set up the colors for that scroller.



Click on New

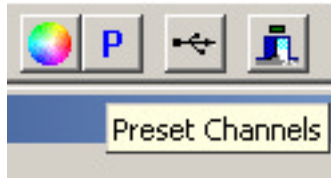


Then click on Add color

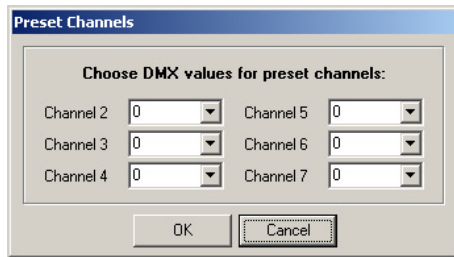


You will see a windows for adding colors:

1. Pick a color
  2. Wriht a name or a number
  3. Insert the DMX value of the color
- (If you don't know the color: Connect your scroller to the CCC and move the slider until you get to the right color. The CCC sends out the DMX value in real time.)

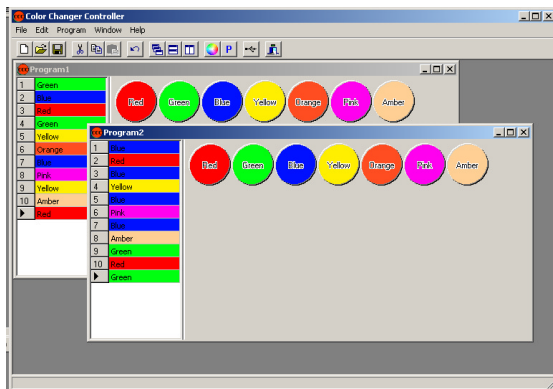


When all the colors in the color changer are set, click at the Preset icon.



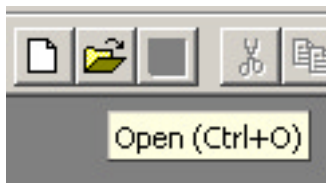
Set in DMX values for the control channels as you wish. These are normally controlling the fan and scrolling speed etc. Click OK when done.

Save the unit. You are now ready to program a cue for your show.



Pick the colors for the cue by clicking on the color icons. You will see that the colors appear in a cue to the left.

It is possible use the normal windows commands to cut, copy and paste in the cue. You can also have more windows visible for programming several CCC's at the same time.



If you already has a ready setup you can use the open dialog and select a file.



When the cue are ready, click on the transmit button, and the settings will be transfered to the CCC.

The unit is now ready to be mounted on the followspots handle using velcroue and to connect to the colorchanger.

### The functions of the CCC one button operation:

Push to step forward the scenes in the cue.

Push and hold for 3 sec. (The display starts flashing) Pushing the button now will step backward the scenes.

Waiting for 3 sec without pushing returns to normal forward mode.

Backup solution: If you suddenly needs another color that is not programmed in the cue!

Push and hold the button for 10 sec. This take you to the stepmode, where all the colors of the scroller are set.

This will follow the colorsettings made in the right window of the PC program. Step through the colors.

Push and hold the button for 10 sec. again, returns to normal operation.

For support:

Tlf. +47 61341940 - Fax. +47 61341941  
office@cls.no - www.cls.no

Developed and manufactured in Norway by MTI Norge AS, N-2940 Heggnes